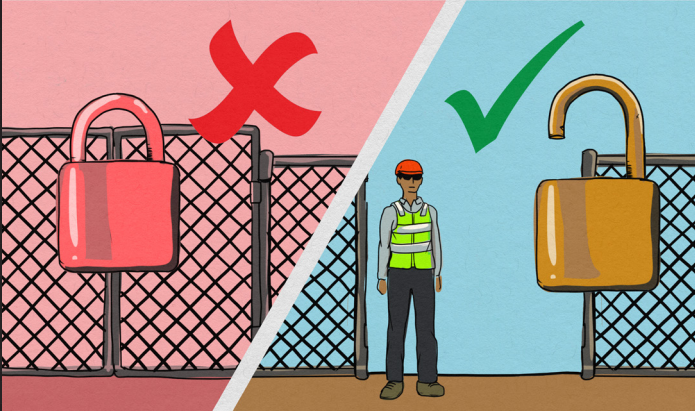


SAFE DELIVERY GUIDELINES FOR DINCEL DELIVERIES

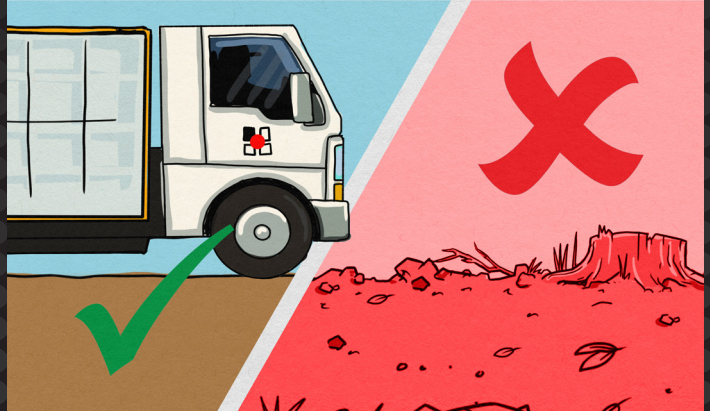
SITE ACCESS

Site must be open with an authorised site representative present at delivery.



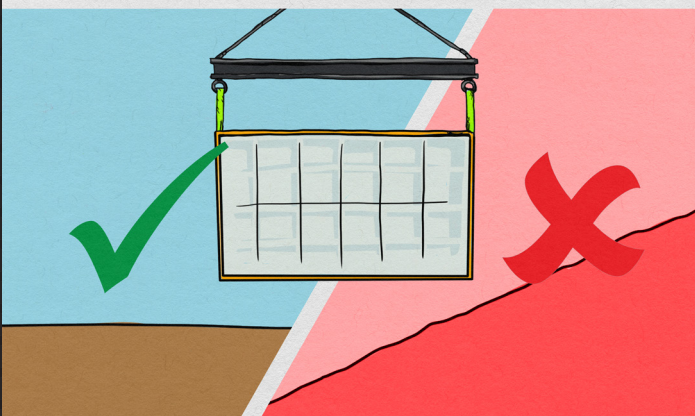
DELIVERY AREA

Clear, safe access and paths to the delivery area.



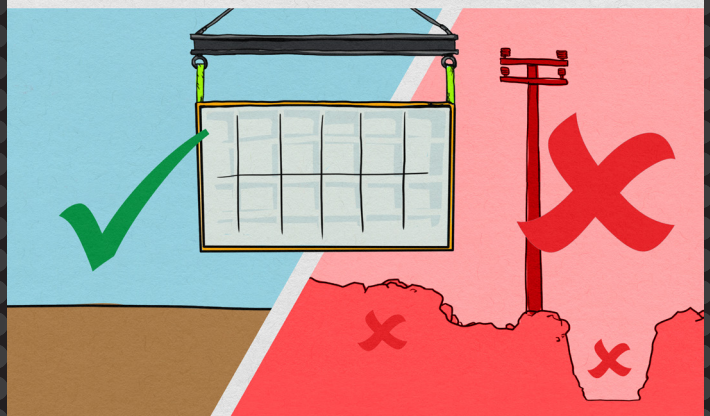
SLOPING GROUNDS

Goods won't be unloaded on steep or sloping ground.



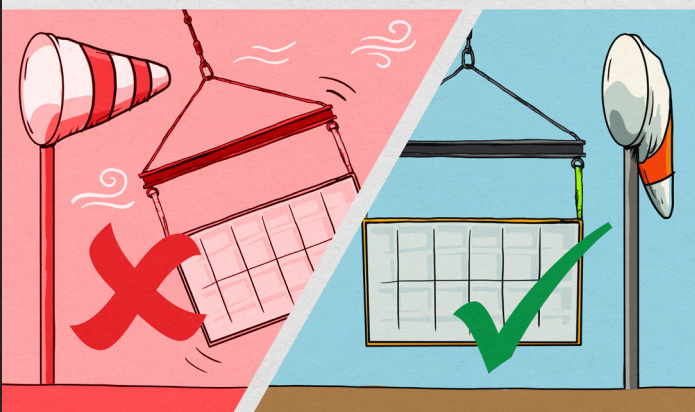
GROUND CONDITIONS

Flat, solid ground for crane setup; no overhead powerlines or trenches.



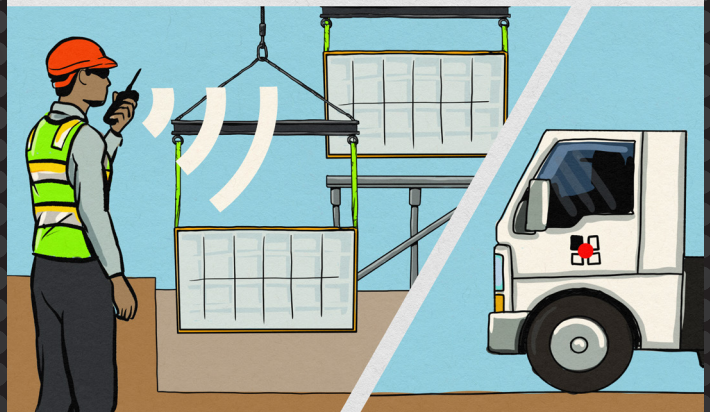
WINDY CONDITIONS

Crane may stop if winds are too strong; delivery might need to be rescheduled.



COMMUNICATION

Clear communication is required between a qualified spotter and the driver.



SAFE DELIVERY GUIDELINES FOR DINCEL DELIVERIES

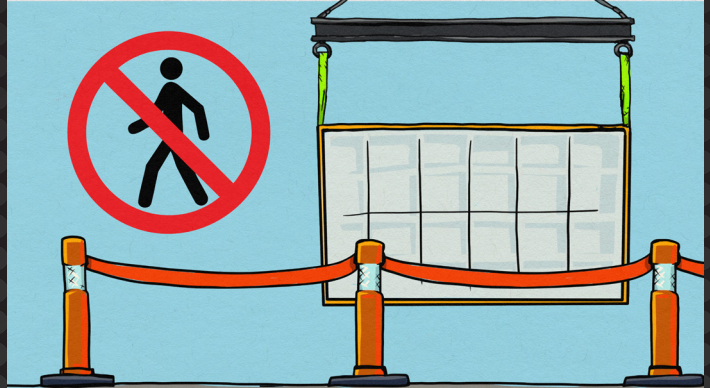
TRAFFIC CONTROL

Certified traffic controllers must be present on public roads.



PEDESTRIAN ACCESS

Pedestrians must be kept clear during crane operations.



DRIVER RESPECT

Drivers should be treated respectfully, with no harassment or discrimination.



POWERLINES

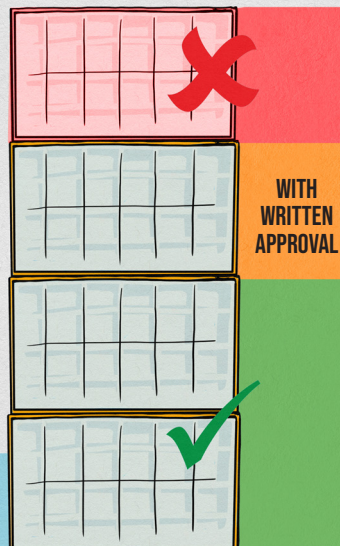
A qualified spotter must be provided if needed, no unloading in unsafe zones near powerlines.



UNLOADING HEIGHT

Default unload height: 2 PACKS.

Can unload 3 packs high with written approval of safe site conditions.



UNLOADING NEAR EXCAVATIONS

Keep a safe distance between crane support and trenches. 1:1 RULE FOR FIRM GROUND / 2:1 FOR LOOSE GROUND

