

PERMANENT POLYMER FORMWORK FOR RESIDENTIAL,  
COMMERCIAL, INDUSTRIAL AND CIVIL APPLICATIONS

**THE NEXT LEVEL.**





**DINCEL ORIGINATED AS AN ENGINEERING FIRM BACK IN 1977 BY BURAK DINCEL. IN 2006, THE PRODUCT KNOWN AS DINCEL WALLING WAS ENGINEERED AND MANUFACTURED TO WHAT IS NOW A LEADING STRUCTURAL WALLING SOLUTION FOR BUILDING AND CONSTRUCTION.**

Dincel permanent formwork has been developed to meet the demand and pace of today's building developments; addressing cost, speed, compliance, defects, design possibilities, building longevity and liveability. Dincel Structural Walling enables load bearing walls and columns to be constructed at lower cost, in less time and with lower skill demand than by traditional masonry or concrete. Following five years of worldwide research and development, extensive consultation with engineers, architects, builders and developers, evaluation and certification by Universities and the CSIRO and also feedback from building trades, Dincel Structural Walling has emerged as an advanced, innovative, and mature solution to many of today's construction problems.



# OUR PRODUCT.

Dincel Structural Walling is different to traditional concrete formwork. A unique patented snap-lock joint connects the Dincel panels for fast and easy installation, delivering a fully waterproof wall when filled with concrete. It's also lightweight for greater safety and manoeuvrability on-site.

- ✓ **LIGHTWEIGHT**
- ✓ **'SNAP-LOCK' TECHNOLOGY**
- ✓ **FAST INSTALLATION**
- ✓ **PREVENTS MOULD & MILDEW**
- ✓ **LESS REINFORCING**
- ✓ **NO AIR VOIDS**
- ✓ **INTERNAL CRACK CONTROL**
- ✓ **FIRE RESISTANCE TESTED**
- ✓ **EASY TO RENDER OR CLAD**
- ✓ **WATERPROOF CERTIFIED**



**WITH DINCEL STRUCTURAL WALLING, 50% CONSTRUCTION TIME SAVINGS CAN BE ACHIEVED.**



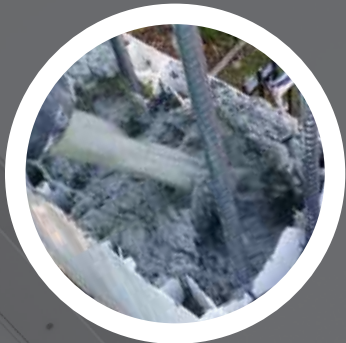


**DINCEL STRUCTURAL WALLING IS A STAY-IN-PLACE  
POLYMER FORMWORK THAT ACTS AS A 'PROTECTIVE SKIN'  
THAT REQUIRES NO ADDITIONAL WATERPROOF MEMBRANE  
WHEN FILLED WITH READY MIXED CONCRETE.**



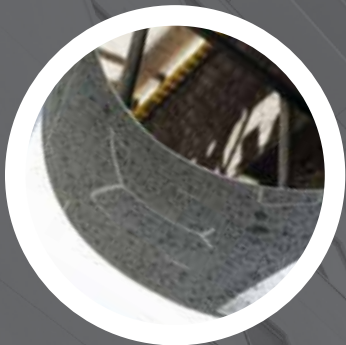
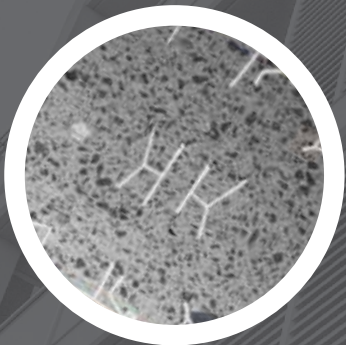
**AS3600 COMPLIANT**

Dincel Walls and Columns can be designed in accordance with AS3600 Concrete Structures Code, as certified by the University of New South Wales.



**NO AIR VOIDS OR HONEYCOMBING**

Dincel's polymer is impervious which does not suck water from wet concrete. Therefore no friction occurs between the formwork and concrete infill, preventing honeycombing and air voids.



**LESS REINFORCEMENT**

Designed with an impervious vapour barrier for both faces along with built-in crack control joints that eliminate the need for crack control steel.



**INCREASES CONCRETE STRENGTH**

Dincel Wall encapsulation achieves greater concrete strength by minimising moisture evaporation throughout the curing process.

**PREVENTS CONCRETE CANCER**

Conventional concrete is porous which leads to corrosion and concrete degradation issues. Concrete cracking is unavoidable, inadequate concrete cover, honeycombing and air voids can lead to concrete cancer.

**AIR VOIDS AND HONEYCOMBING CAN LEAD TO STRUCTURAL ISSUES  
AND NON-COMPLIANCE IN FIRE AND ACOUSTICS.**



# OUR MARKETS.



“UTILISING DINCEL AS A LOADBEARING WALL SYSTEM IN LIEU OF CONVENTIONAL COLUMN-SLAB-INFILLS ACHIEVED A MOST COST-EFFICIENT FLOOR SYSTEM, WITH A SIX MONTH TIME SAVING FROM OUR CONSTRUCTION PROGRAM. ON SITE, THE DINCEL WALLS WERE ALSO EASY-TO-HANDLE. THERE WAS NO RELIANCE ON CRANES, THE SITE WAS CLEANER WITH REDUCED WASTAGE.”

Charbel Barakat  
Manager, Ceerose Property Group



## RESIDENTIAL CONSTRUCTION

Columns, load-bearing walls, facades, basements, lift shafts, stairwells, swimming pools, planter boxes and fences.



## COMMERCIAL CONSTRUCTION

Columns, load-bearing walls, facades, basements, lift shafts, stairwells, swimming pools, planter boxes and fences.



## CIVIL & INDUSTRIAL CONSTRUCTION

Columns, load-bearing walls, cable pits and substations.



## WATER TANKS & RESERVOIRS

Water (detention, retention, stormwater pits), waste water, sewerage, sludge, petrol, manure, grain and contaminated soil.



## CUSTOM PROJECTS

An extensive range of profile components available, many curved configurations and other enclosures can be achieved.



## PROJECT: CEEROSE APARTMENTS

Location: Camperdown, NSW  
Profiles: 110mm, 200mm  
Application: Basement, party walls, lift/stair/service shafts, deep beams, blade columns, and facade walls



# COMPLIANCE, SAFETY & ENVIRONMENTAL CREDENTIALS.

DINCEL STRUCTURAL WALLING'S BEST ENVIRONMENTAL PRACTICE (BEP) APPROVED PVC IS FREE OF HEAVY METAL FREE STABILISERS, PLASTICISERS AND ALLOWS 100% RECYCLABILITY DURING MANUFACTURING, CONSTRUCTION AND END OF LIFECYCLE.



## WORKPLACE SAFETY

With the reduction of non-skilled labour due to the ease of handling and installation, Dincel Walls minimises the risk of back injuries, trip hazards, falling from heights and other common WHS injuries and issues.



## FIRE & NON COMBUSTIBILITY

Compliance tested by CSIRO and Fire Engineering and satisfied:

- Non Combustible
- Fire rated 90 – 240 minutes



## ACOUSTIC TESTED

CSIRO acoustically tested walling solutions for complete peace of mind.



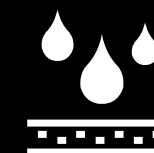
## VOC TESTED

Dincel Walls are tested for toxicity and VOC (non-toxic tested). Dincel's Volatile Organic Compound (VOC) measurement is 50 times less than the recommended Green Star environmental threshold making it a proven choice for sustainable construction.



## EARTHQUAKE TESTED

Dincel Walls with concrete infill can create earthquake, cyclone and hurricane proof buildings through ductile composite action, thus achieving greater safety for occupants than offered by concrete alone.



## WATERPROOF

Dincel Panel Joints are waterproof as confirmed by CSIRO tests and under 6m of water head pressure at the panel joints.



# CLADDING & FINISHES.

DINCEL STRUCTURAL WALLING CAN BE COMPLETED IN A LARGE RANGE OF FINISHES INCLUDING CLADDING, RENDERS OR PAINTED.



## RENDER

Adhering a soft, textured and coloured render product to Dincel Walls provides a cost effective solution to painted concrete.



## CLADDING

Stone, timber and many other cladding design options can be easily achieved with acrylic adhesives.



## ORIGINAL/PAINTED

An increasingly popular architectural design alternative is the subtle lines of the original Dincel Wall or painted to style.





**AUSTRALIA**  
**HEAD OFFICE & MANUFACTURING**

**NEW SOUTH WALES**

101 Quarry Road,  
Erskine Park NSW 2759  
PO BOX 104, St Clair  
NSW 2759 Australia  
**T:** +612 9670 1633  
**F:** +612 9670 6744  
**E:** [construction@dincel.com.au](mailto:construction@dincel.com.au)

**VICTORIA**

Melbourne  
**P:** 1300 DINCEL

**QUEENSLAND**

Yatala  
**P:** 1300 DINCEL

**[WWW.DINCEL.COM.AU](http://WWW.DINCEL.COM.AU)**

**1300 DINCEL**

**THE NEXT LEVEL.**